



Introducing the *Evolution* *PSV™*



Evolution PSV

- Incorporates Air-Foam Floatation Technology
- For clients with high/moderate skin protection needs and moderate positioning needs
- Lightweight
- Easy to adjust



Components

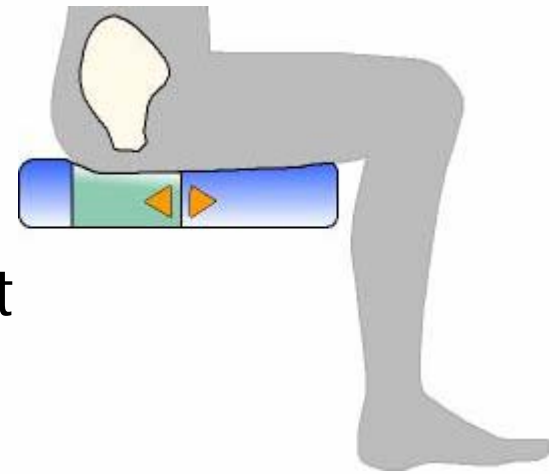
- Air-Foam Floatation Cushion
- PSV Valve
- Modifiable Wedge
- Cover





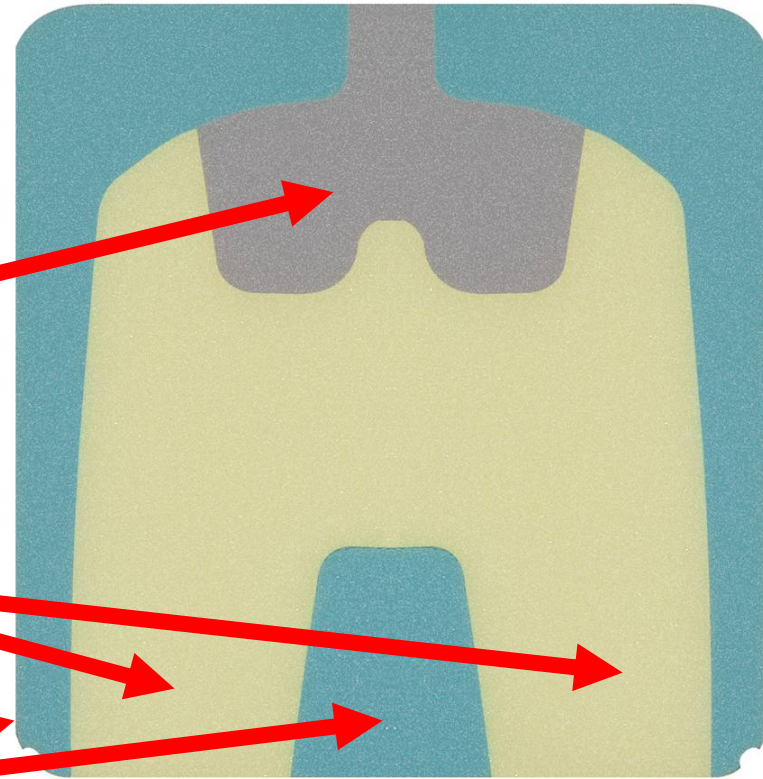
Air-Foam Floatation Technology

- All *VARILITE* products incorporate Air-Foam Floatation technology
- Air is throughout the open cell foam- no separate "air bladder"
- Air provides pressure distribution
- Foam provides postural support, maintains cushion shape
- Research has shown that Air-Foam Floatation technology is the best at minimizing vibration transmission



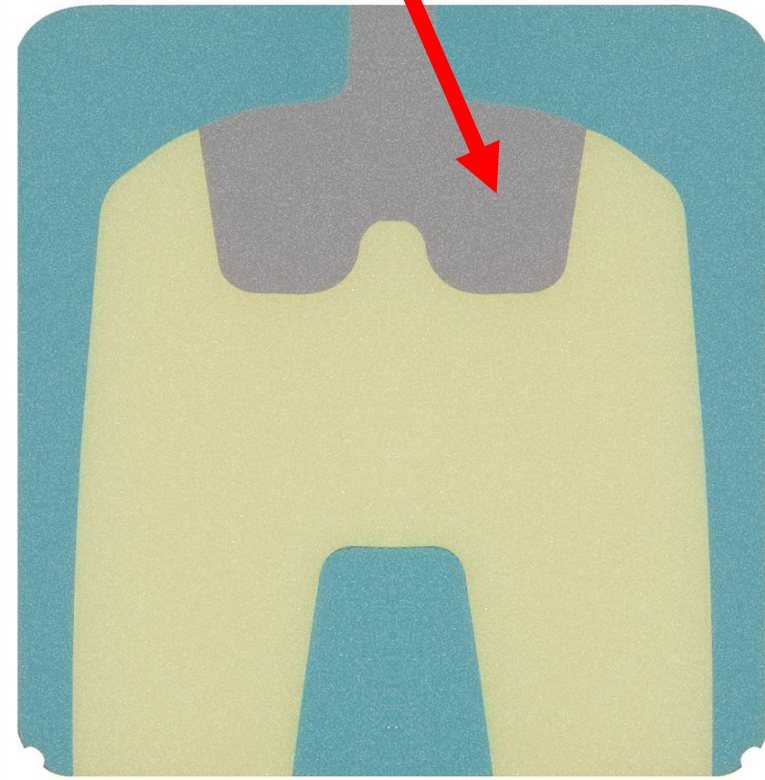
Evolution Foam Stiffness

- Postural support is created by the 3 types of foam:
 - Softest foam under the ischium
 - Medium foam under the thighs/femurs
 - Firmest foam for medial and lateral thigh support



Ischial Area Foam

- Reduces the surface interface pressure underneath IT's and sacrum
- Softest foam for the decubitus-sensitive area of the IT's



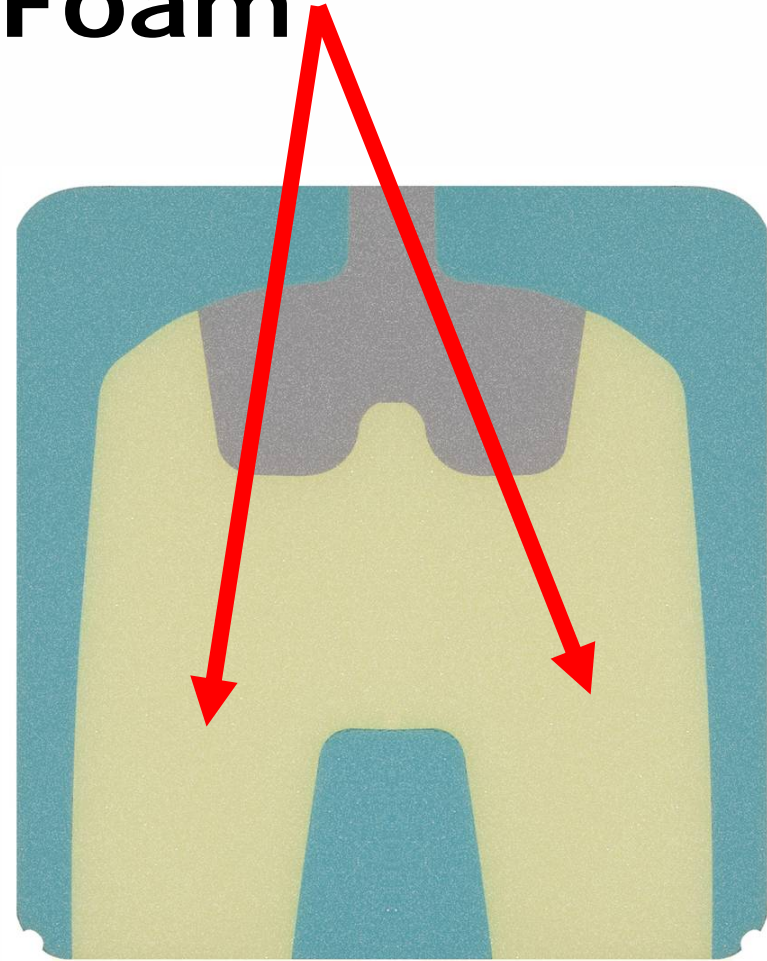
Ischial Area Foam

- Indent due to firmer foam pushing up more on cushion surface than the less firm ischial area
- The cushion has **NOT** taken a set or failed
- Cushion is functioning normally
- Reduces the surface interface pressure underneath IT's and sacrum



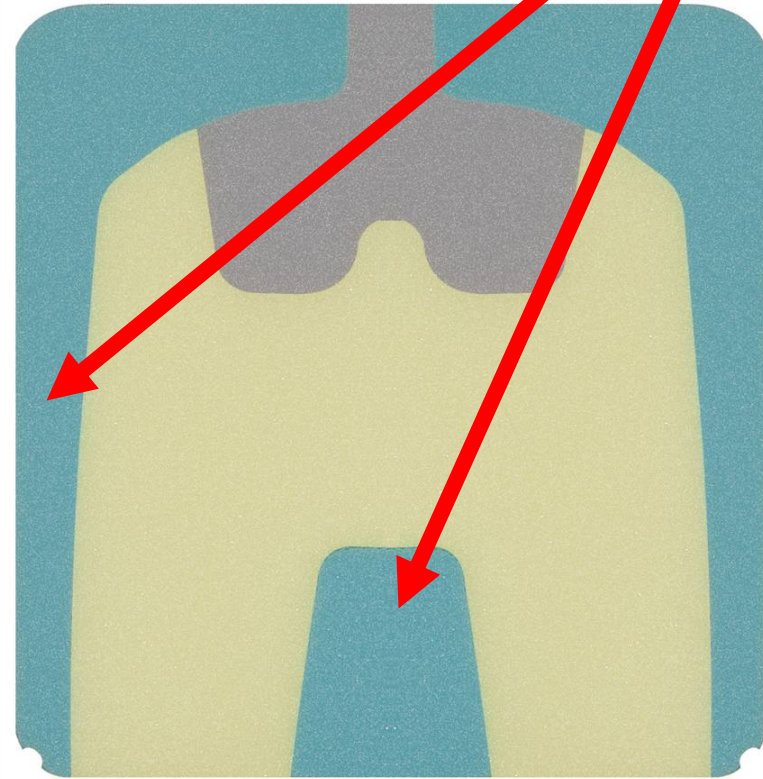
Thigh Area Foam

- Firmer than ischial area foam
- Creates pre-ischial ridge and pelvic bucketing
- Maintains pelvic position by restricting forward and lateral pelvic migration
- Provides support during functional transfers



Medial & Lateral Support Foam

- Firmest foam area
- Medial & lateral thigh support minimizes lower extremity adduction & abduction
- Posterior & lateral pelvic support provides stability
- Postural support created through immersion



Four way stretch fabric

- The open cell foam block is bonded to fabric so the cushion holds air
- The four-way-stretch fabric provides maximum conformity during immersion for optimal pressure distribution
- Puncture & water resistant





PSV Valve





PSV:

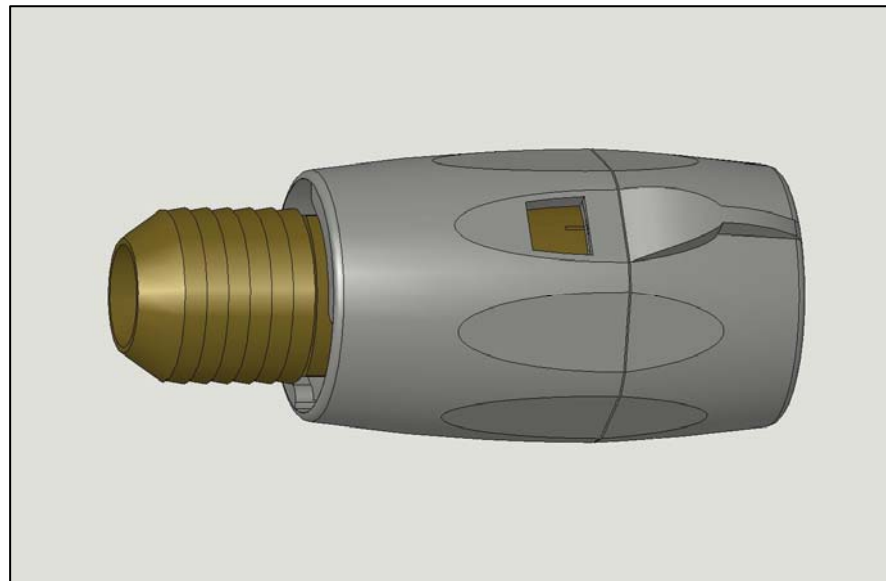
Pressure Setting Valve

- Eliminates guesswork
- Precise
- Reliable
- Easy



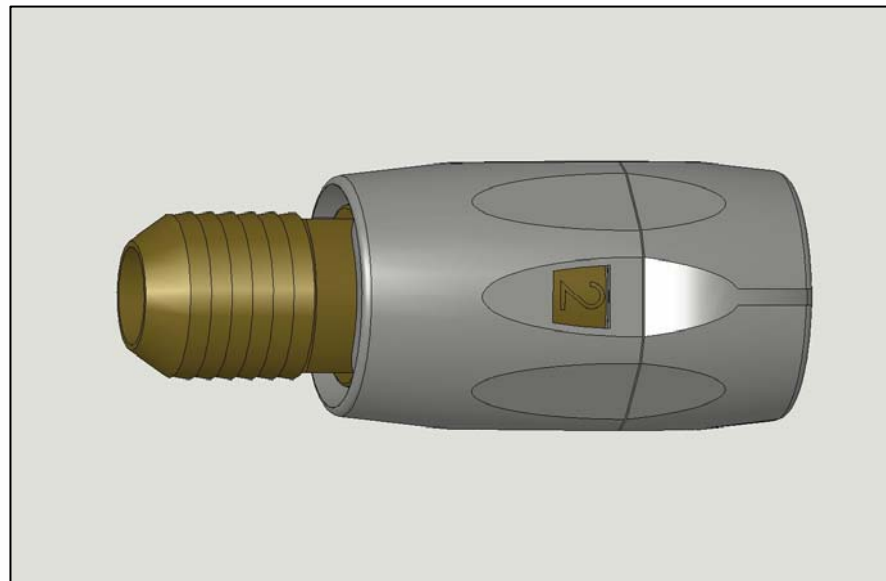
3 steps to adjust PSV

1. Cushion inflated, valve closed



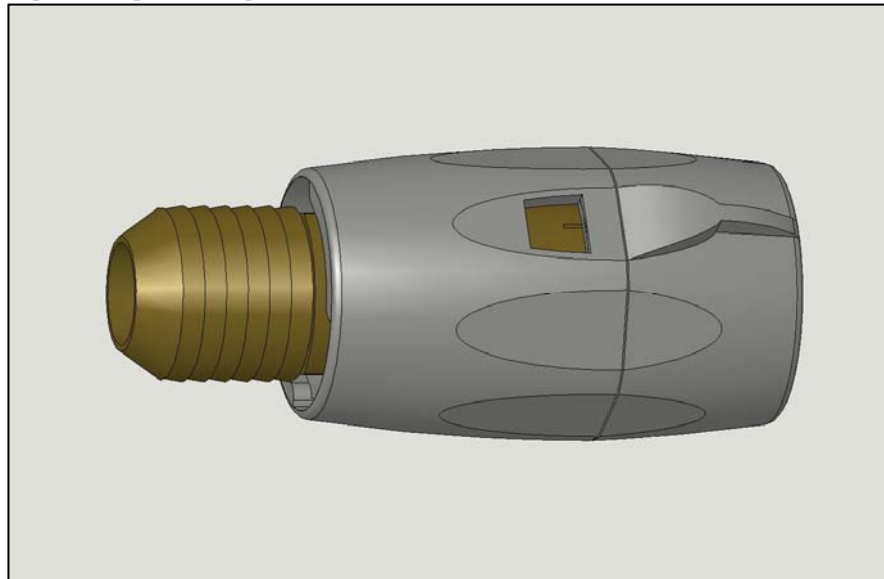
3 steps to adjust PSV

1. Cushion inflated, valve closed
2. **Set valve to indicator 1, 2 or 3**
air will escape for 10-20 seconds and then stop



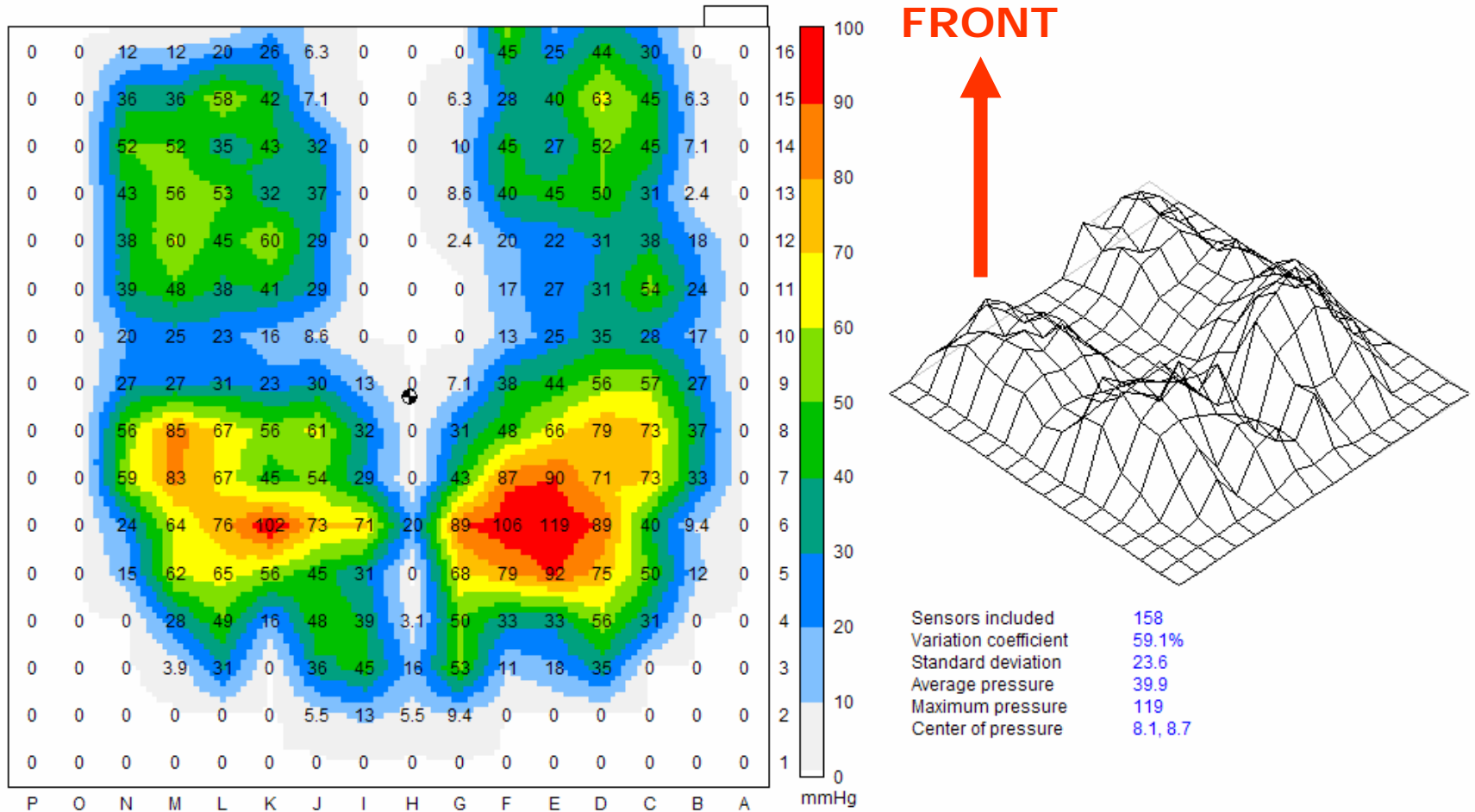
3 steps to adjust PSV

1. Cushion inflated, valve closed
2. Set valve to indicator 1, 2 or 3
air will escape for 10-20 seconds and then stop
3. **Close the valve**



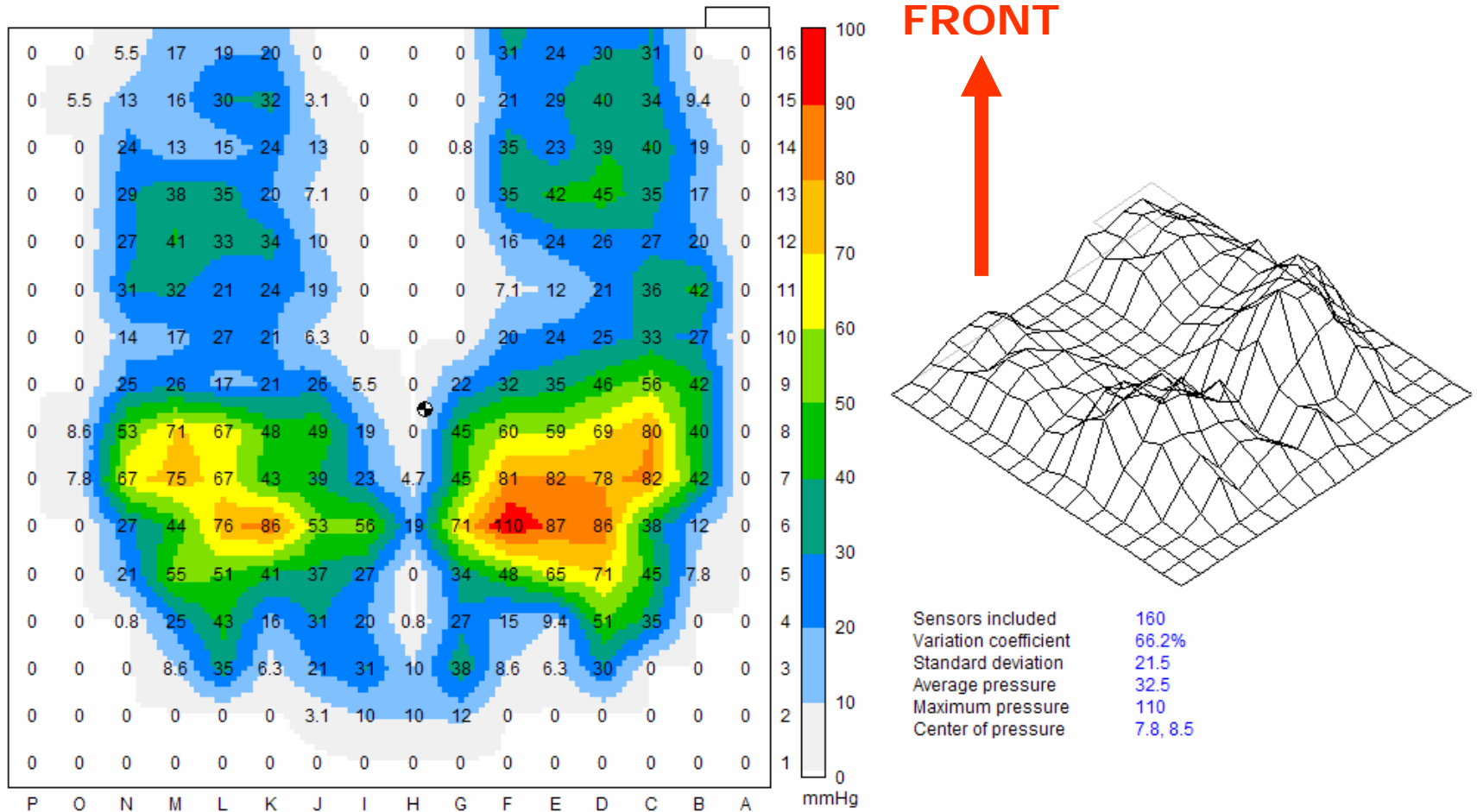
PSV Settings

- Fully inflated cushion



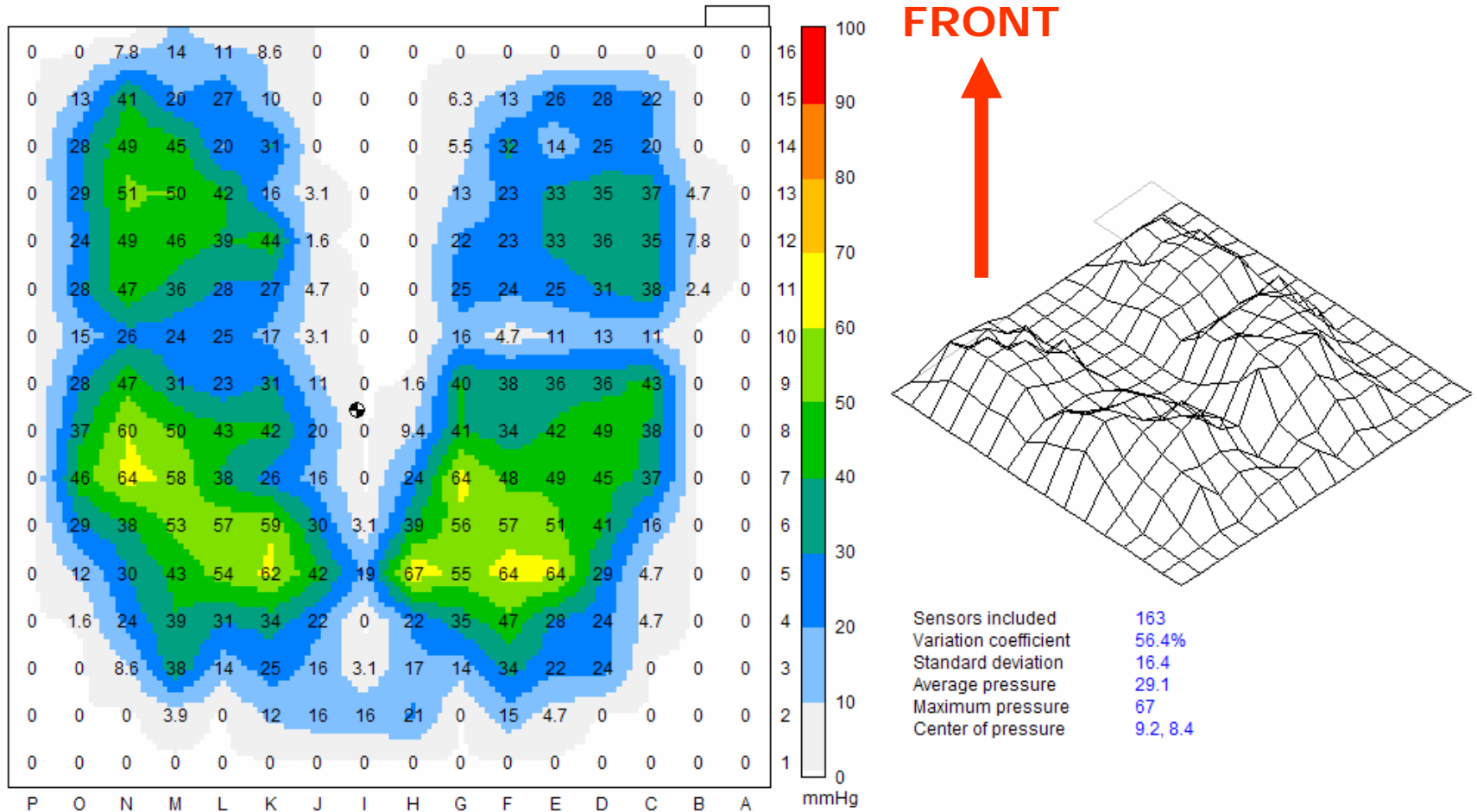
PSV Settings

- Setting #1: Some air released



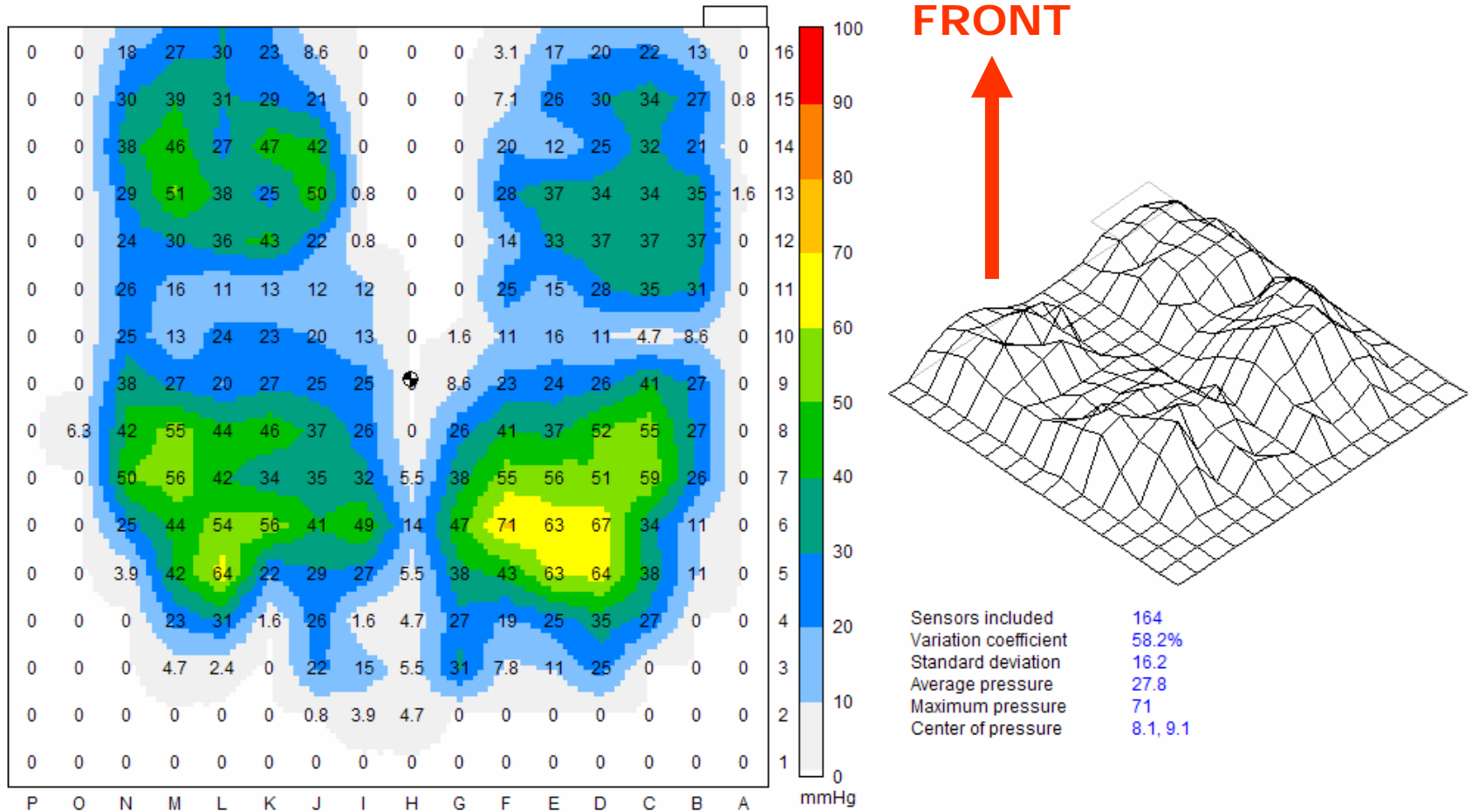
PSV Settings

- Setting #2: Optimal immersion



PSV Settings

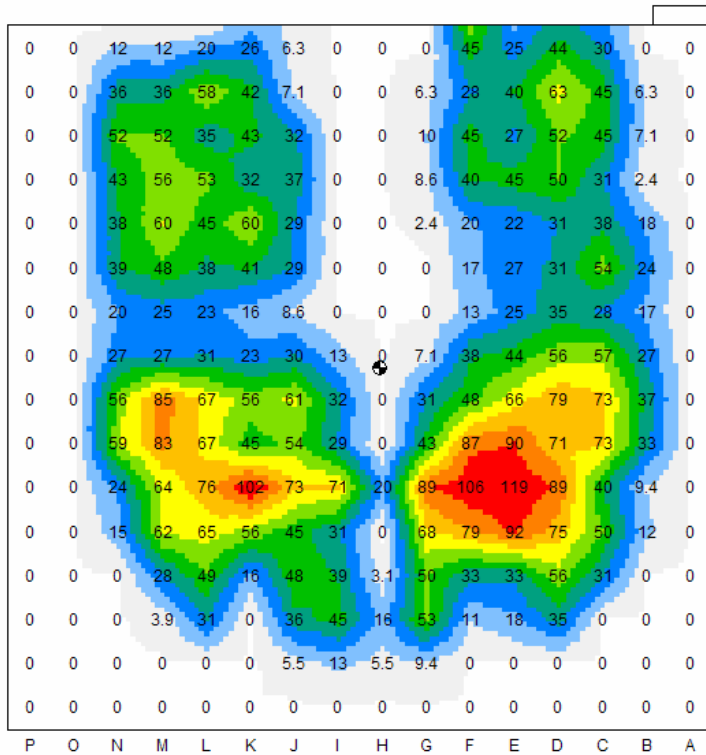
- Setting #3: More air released





PSV Settings

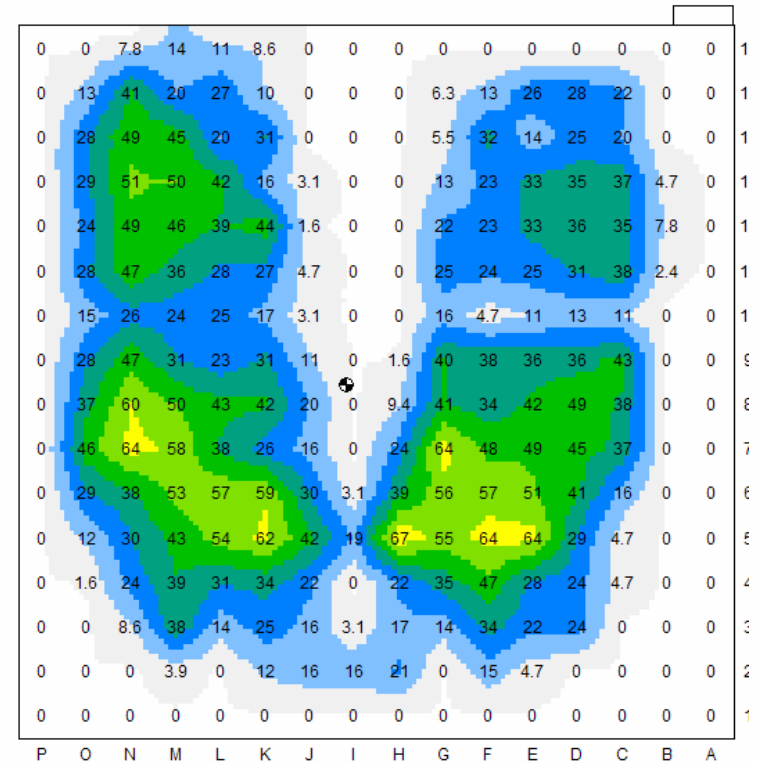
Fully inflated



FRONT



PSV Setting #2



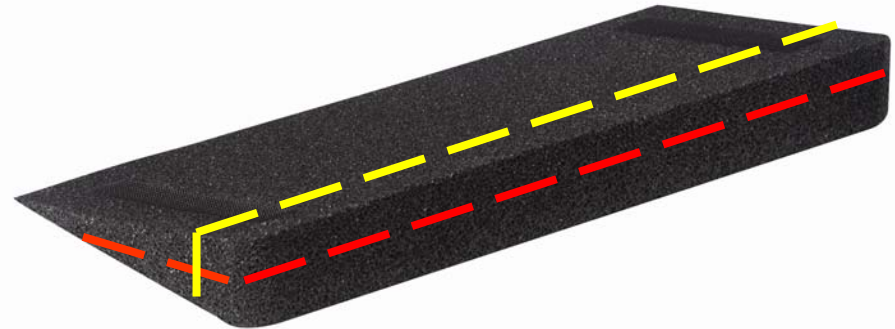


Modifiable Wedge



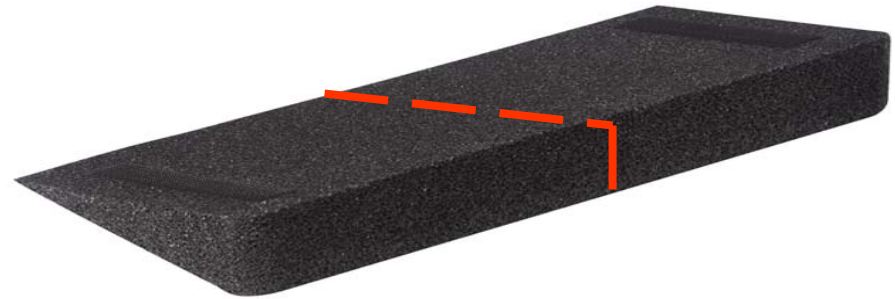
The Role of The Modifiable Wedge

- Cut horizontally or vertically to achieve the desired wedge shape for maximum pressure reduction and positioning



The Role of The Modifiable Wedge

- Cut horizontally or vertically to achieve the desired wedge shape for maximum pressure reduction and positioning
- Cut down the middle for unilateral elevation



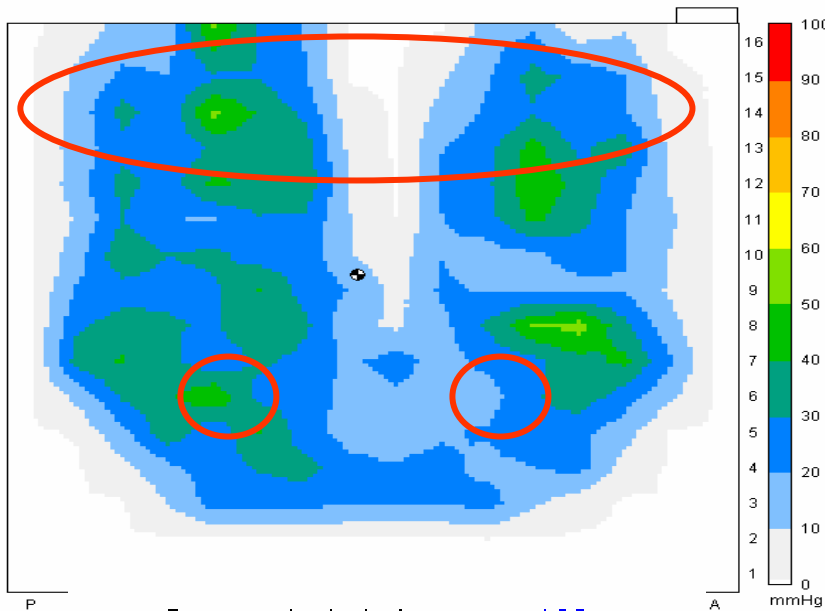
The Role of The Modifiable Wedge

- Cut horizontally or vertically to achieve the desired wedge shape for maximum pressure reduction and positioning
- Cut down the middle for unilateral elevation
- Placed inside the cushion cover to maintain position



Use of the Wedge

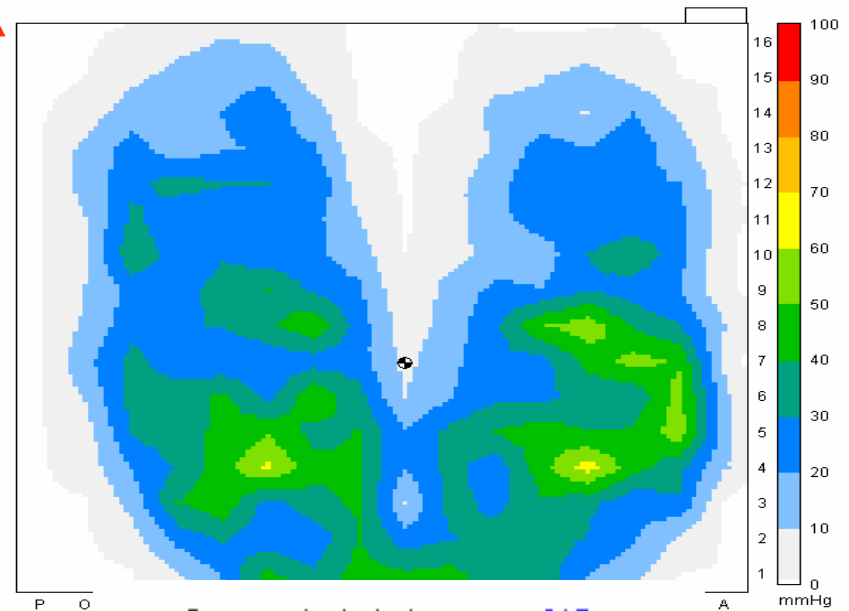
With wedge



Sensors included	182
Variation coefficient	47.2%
Standard deviation	10.9
Average pressure	23.1
Maximum pressure	55
Center of pressure	8.9, 9.5

FRONT

Without wedge



Sensors included	217
Variation coefficient	59.6%
Standard deviation	14
Average pressure	23.5
Maximum pressure	65
Center of pressure	8.0, 7.0



Cushion Cover





The Importance of a Good Cover

- Available in both mesh and incontinence
- Machine washable
- Non-skid surface on bottom
- Reticulated foam inside promotes air exchange and improves pressure distribution
- Always use the Evolution with its cover

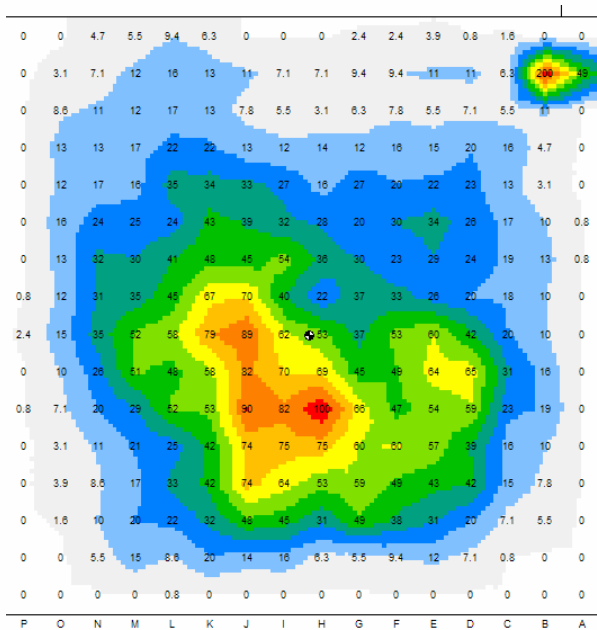


Case Example #1

- 50 yr old male living in an assisted living facility
- Diagnosis: cerebral palsy with spastic muscle tone and fixed contractures at multiple joints including hips & knees
- Presents with "C" shaped posture (posterior pelvic asymmetry)
- History of sacral pressure ulcers
- Dependent for repositioning
- Complains of discomfort & sliding
- Currently using air-only skin protection wheelchair cushion

Case Example #1

Current cushion

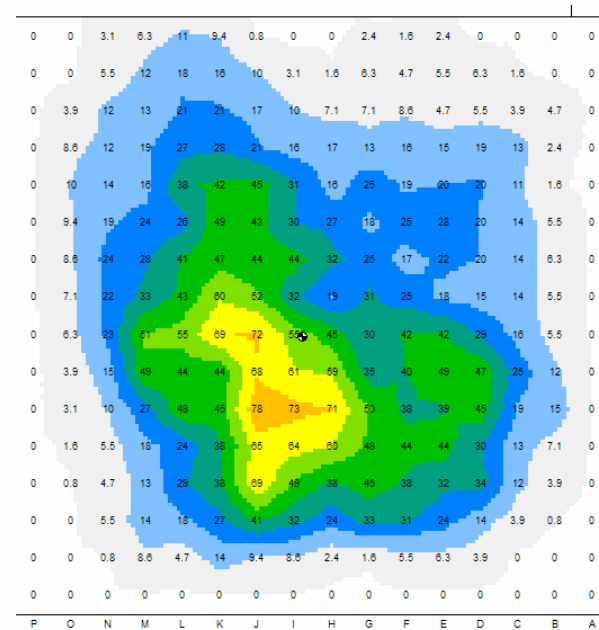


Sensors included 210
 Variation coefficient 88.1%
 Standard deviation 24.9
 Average pressure 28.2
 Maximum pressure 200
 Center of pressure 8.3, 8.0

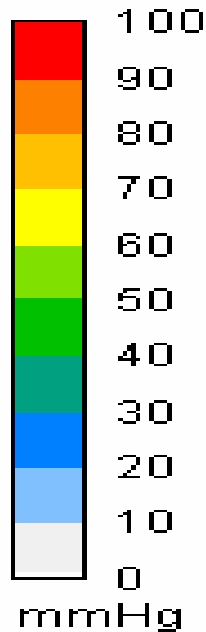
FRONT



Evolution



Sensors included 198
 Variation coefficient 77.2%
 Standard deviation 18.5
 Average pressure 24
 Maximum pressure 78
 Center of pressure 8.8, 8.0



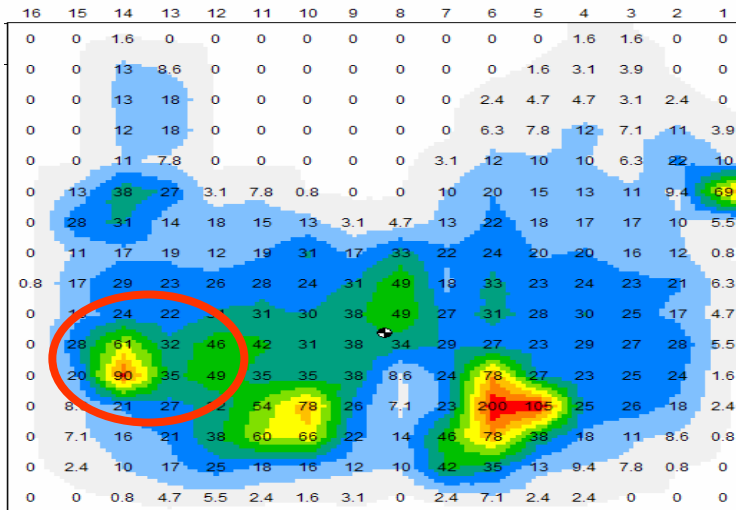


Case Example #2

- 42 yr old male living independently in home setting
- Fell 100' 15 yrs ago sustained multiple injuries including T3 incomplete SCI
- Brown-Sequard syndrome with asymmetric spasticity
- History of a pressure ulcer at left trochanter with subsequent flap surgery

Case Example #2

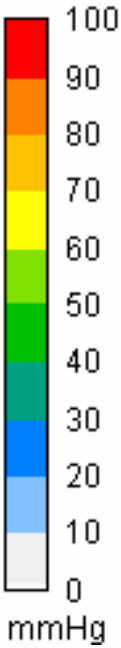
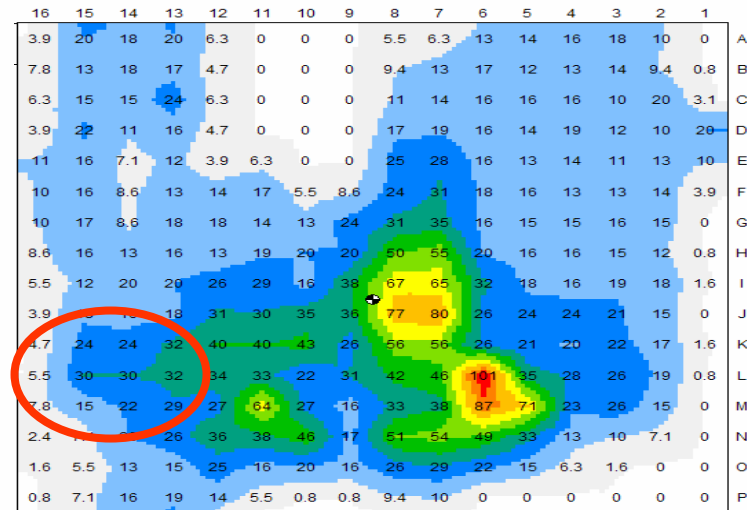
Without wedge



FRONT



With wedge



Sensors included 190
 Variation coefficient 100.1%
 Standard deviation 21.7
 Average pressure 21.7
 Maximum pressure 200
 Center of pressure 10.6, 8.4

Sensors included 229
 Variation coefficient 76.6%
 Standard deviation 15.6
 Average pressure 20.4
 Maximum pressure 101
 Center of pressure 9.5, 8.5



Diagnoses

- The Evolution cushion is suitable for people with such diagnoses as (but not limited to):
 - Spinal cord injury
 - Spinal cord disease
 - Multiple Sclerosis
 - Demyelinating disease
 - Cerebral palsy
 - Motor neuron disease
 - Post polio
 - Traumatic brain injury
 - Spina bifida
 - Alzheimer's
 - Parkinson's



Client Groups

- The Evolution wheelchair cushion is suitable if the person has one or more of the following:
 - Current pressure ulcer
 - History of a pressure ulcer
 - Unable to independently perform a weight shift
 - Insensate at the seated surface



Evolution PSV Sizes available

Sizes Available	12 X 14	14 X 14	14 X 16	16 X 16	16 X 18	16 X 20
	(30x35 cm)	(35x35 cm)	(35x40 cm)	(40x40 cm)	(40x45 cm)	(40x50 cm)

Sizes Available	17 X 17	18 X 16	18 X 18	18 X 20	20 X 16	20 X 18
	(43x43 cm)	(45x40 cm)	(45x45 cm)	(45x50 cm)	(50x40 cm)	(50x45 cm)

Sizes Available	20 X 20	22 X 18	22 X 20	24 X 18	24 X 20
	(50x50 cm)	(55x45 cm)	(55x50 cm)	(60x45 cm)	(60x50 cm)